

# Tarkett Lino

LINOLEUM

40

Naturally  
modern

# NATURALLY MODERN

Made from natural constituents and enriched by more than a century of heritage, Tarkett Lino is a modern solution to the challenges of contemporary interior design.

## Modern Design

Our collection reflects the natural elements that inspire it, with a broad palette of subtle shades and patterns, ideal for coordinating floors, walls and even furniture. Using texture and colour, Tarkett Lino can define spaces, highlight architectural details and lend interior surfaces, both straight and curved, a sense of harmony.

## Modern Sustainability

Made from natural materials, our Lino collection provides sustainable, durable flooring for commercial applications. But we go the extra mile in environmental terms, following Cradle to Cradle™ principles and closing the loop with ReStart®, our take-back and recycling programme.

## Modern Performance

While honouring the tradition behind our Lino, we also use modern technology to ensure it can tackle today's challenges. Combining a legacy of expertise with a passion for performance, our flooring is durable, functional and easy to maintain.

Tarkett Human-Conscious Design™

03	Naturally modern
04	<b>TARKETT LINO</b>
06	Modern Design
26	Modern Sustainability
30	Modern Performance
34	<b>VERSATILE USE</b>
36	<b>HERITAGE</b>
38	<b>RANGE OVERVIEW</b>
42	<b>REFERENCES /CASE STUDIES</b>
44	<b>TECHNICAL DATA</b>

# TARKETT LINO

LinoWall cotton 122 / Originale blossom 435

Natural, versatile and sustainable, combining tradition, craftsmanship and innovation, Tarkett Lino offers a modern approach to the flooring needs of today and lifestyles of tomorrow.

## MODERN DESIGN

Rich, authentic and versatile

- Modern flooring with a **matt finish** to protect and highlight its authentic look.
- Modern, **subtle patterns and a palette of contemporary colours** that harmonise easily.
- Modern layout with a versatile collection to inspire and **coordinate all the elements in a space**, from floors to walls and even furniture.

## MODERN SUSTAINABILITY

Our 2.5mm Tarkett Lino range delivers the lowest carbon footprint in its category throughout its lifecycle\*

- Tarkett Lino is a bio-based product, made from **natural and renewable ingredients**.
- Originale is **Cradle to Cradle Certified™ Gold** (a first in this market) and **the rest of the range is C2C Certified™ Silver**.
- Contains recycled materials and can itself **now be recycled after use** via our ReStart® take-back and recycling programme.
- **Sustainably produced** at our plant, where we work continuously to reduce our environmental footprint.
- Promotes health and well-being by offering **optimal indoor air quality** (VOC≤10µg/m³), **and is approved by Allergy UK**.

## MODERN PERFORMANCE

Blending the best of tradition with modern performance

- **Superb durability** from our **xf² finish**, with excellent resistance to mechanical wear and stains, ideal for demanding environments.
- **Versatile, functional and high-performance** flooring solutions to meet a wide variety of needs: acoustic, conductive, static dissipative, wall covering and **even loose-lay solutions (NEW!)**
- **Tarkett Lino has naturally anti-bacterial properties** against the most common bacteria, such as E-coli and MRSA.

# MODERN DESIGN



LinoWall olive 155 / Veneto khaki 757

## A modern, living material

Not 'just' a covering, Tarkett Lino is a material. One that is natural and noble. It is unique, with its own distinctive hues and matt aspect.

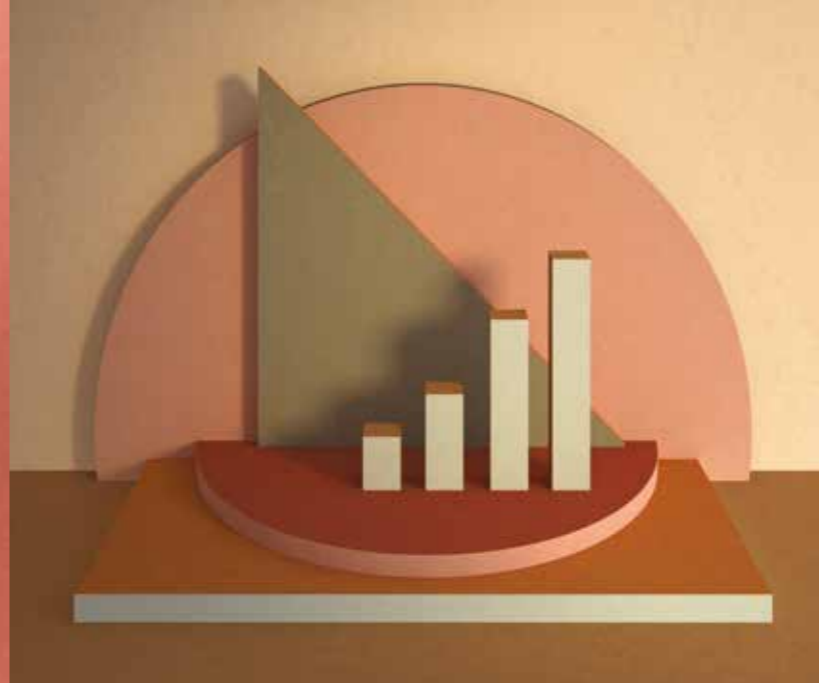
In colours as natural as the elements from which it is made, it can cover almost any surface, from floors and walls to furniture.

Tarkett Lino is the perfect medium for architects and interior designers, allowing them to give any space its own identity.

**Modern material:** Tarkett Lino's **authentic matt look** gives it depth and tactile appeal. Like wood, stone or even marble, it holds the fascination of a noble raw material.

**Modern look:** the wide choice of colours and patterns coordinates easily with other neutral materials. Tarkett Lino's **fresh, natural, tone on tone design** creates an elegant effect that can be either contemporary or timeless. The different collections will complement decors from traditional (Veneto) to modern (Etrusco).

**Modern layout:** discover our **unique LinoWall range**, which can create the perfect match between walls and floors, building blocks of colour or creating contrasts on different surfaces. The possibilities are endless, LinoWall even being capable of covering furniture to rewrite the rulebook for interiors.



# MODERN RANGE

## Lino xf<sup>2</sup>

Our range of natural and enriched colours is designed to create coordinated, beautifully contemporary interiors. The collection comes with xf<sup>2</sup> surface technology for optimal resistance and easy maintenance in heavy-traffic areas.

### Veneto

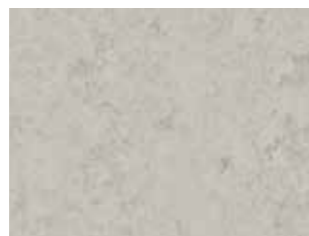
A heritage marble effect with vibrant colours for an authentic look.



Platinum 684

### Style Emme

Combining tone on tone with a subtle marble pattern to fashion a modern classic that has a timeless quality.



Koala 794

### Style Elle

A creative, dynamic pattern featuring directional linear design.



Ferro 305

### Etrusco

A modern, minimalist feel incorporating plain shades that can create blocks of colour.



Shark 004

### Trentino

Creativity and vibrancy from a multicolour pattern with a lively, semi-directional design.



Cloud 505

## The new Originale collection

The only linoleum Cradle to Cradle Certified™ Gold, Originale embodies the essence of Tarkett Lino: authentic, design-focused and sustainable.

Inspired by the natural purity of our **100% Linen** design, Originale fuses delicately distinctive patterns with soft colours made from the finest pigments. The unique palette of tone on tone shades takes its cue from nature. Elegant, contemporary and timeless.

Originale C2C Certified™ Gold is treated with Essenza+, our non-PU acrylic surface protection. Originale is also available with xf<sup>2</sup> surface protection and is then C2C Certified™ Silver.



100% linen 400

## NEW! Lino Loose-Lay

The only linoleum for loose-lay application!

Tarkett Lino Loose-Lay is the natural, **bio-based** and non-PVC smart choice for quick and easy glue free installation and renovation in commercial applications. It offers the assurance to withstand like a glue down product while suitable to be installed on a variety of existing subfloors or damp subfloors reducing down-times & impacts on building daily life to a minimum.

It is offered in a palette of 12 colours coming from the best-selling Veneto colours.

## LinoWall

The only linoleum approved for use on walls and featuring Bs2-d0 fire certification. Conceived for architects, this completely new collection majors on creativity and versatility.

A palette of 10 colours and simple patterns, all designed to coordinate with Etrusco floors.

LinoWall comes with our exclusive xf<sup>2</sup>™ surface treatment and is Cradle to Cradle Certified™ Silver.



Honey 112

# TARKETT LINO OVERVIEW

## Compact

2mm xf <sup>2</sup>	2	Veneto	14171
2.5mm xf <sup>2</sup>	2.5	Etrusco	14177
	2.5	Originale	14142
	2.5	Style Elle	14225
	2.5	Style Emme	14235
	2.5	Trentino	14602
	2.5	Veneto	14172
2.5mm Essenza <sup>+</sup>	E	Originale	14042
	E	Veneto	1805
3.2mm xf <sup>2</sup>	3.2	Veneto	14173

## Acoustic

3.8mm xf <sup>2</sup>	S	Originale Silencio	14232
	S	Style Elle Silencio	14683
	S	Style Emme Silencio	14682
	S	Veneto Silencio	14792
4.4mm xf <sup>2</sup>	AC	Veneto Acoustic Cork <sup>+</sup>	14881

## Technical solutions

2.5mm xf <sup>2</sup>	C	Linoleum Conductive	14992
	SD	Linoleum Static Dissipative	14994
	R10	Veneto Sicuro <sup>+</sup>	1863
	B <sub>fl</sub>	Etrusco B <sub>fl</sub> <sup>+</sup>	14078
	B <sub>fl</sub>	Originale B <sub>fl</sub> <sup>+</sup>	14138
	B <sub>fl</sub>	Style Elle B <sub>fl</sub> <sup>+</sup>	14098
	B <sub>fl</sub>	Style Emme B <sub>fl</sub> <sup>+</sup>	14088
	B <sub>fl</sub>	Trentino B <sub>fl</sub> <sup>+</sup>	14128
B <sub>fl</sub>	Veneto B <sub>fl</sub> <sup>+</sup>	14898	
4.3mm xf <sup>2</sup>	LL	<b>Veneto NEW</b>	<b>14920</b>

## Linoleum Wall

2mm xf <sup>2</sup>	LinoWall 2m width	14110
	LinoWall 1m width <sup>+</sup>	14011

--- Colour code      <sup>+</sup> On request



# Originale



**Pearl**  
401 E-2.5  
NCS S1010-Y30R



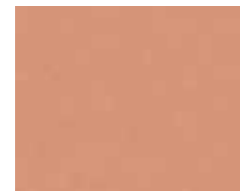
**Raffia**  
408 E-2.5  
NCS S1515-Y30R



**100% linen**  
400 E-S-2.5/3.2  
NCS S4020-Y30R



**Clay**  
431 E-2.5  
NCS S6010-Y30R



**Blossom**  
435 E-2.5  
NCS S6010-Y30R



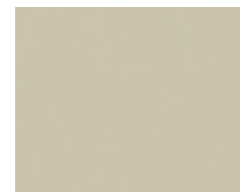
**Hematite**  
440 E-2.5  
NCS S4040-Y70R



**Sienna**  
434 E-2.5  
NCS S4050-Y30R



**Ochre**  
428 E-2.5  
NCS S3040-Y30R



**Foam**  
402 E-S-2.5  
NCS S2502-Y



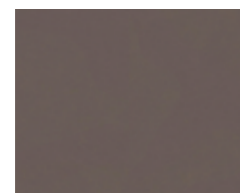
**Cliff**  
485 E-2.5  
NCS S5000-N



**Cornflower**  
460 E-2.5  
NCS S4010-B70G



**Lichen**  
495 E-2.5  
NCS S4010-G90Y



**Pepper**  
473 E-S-2.5  
NCS S6005-Y80R



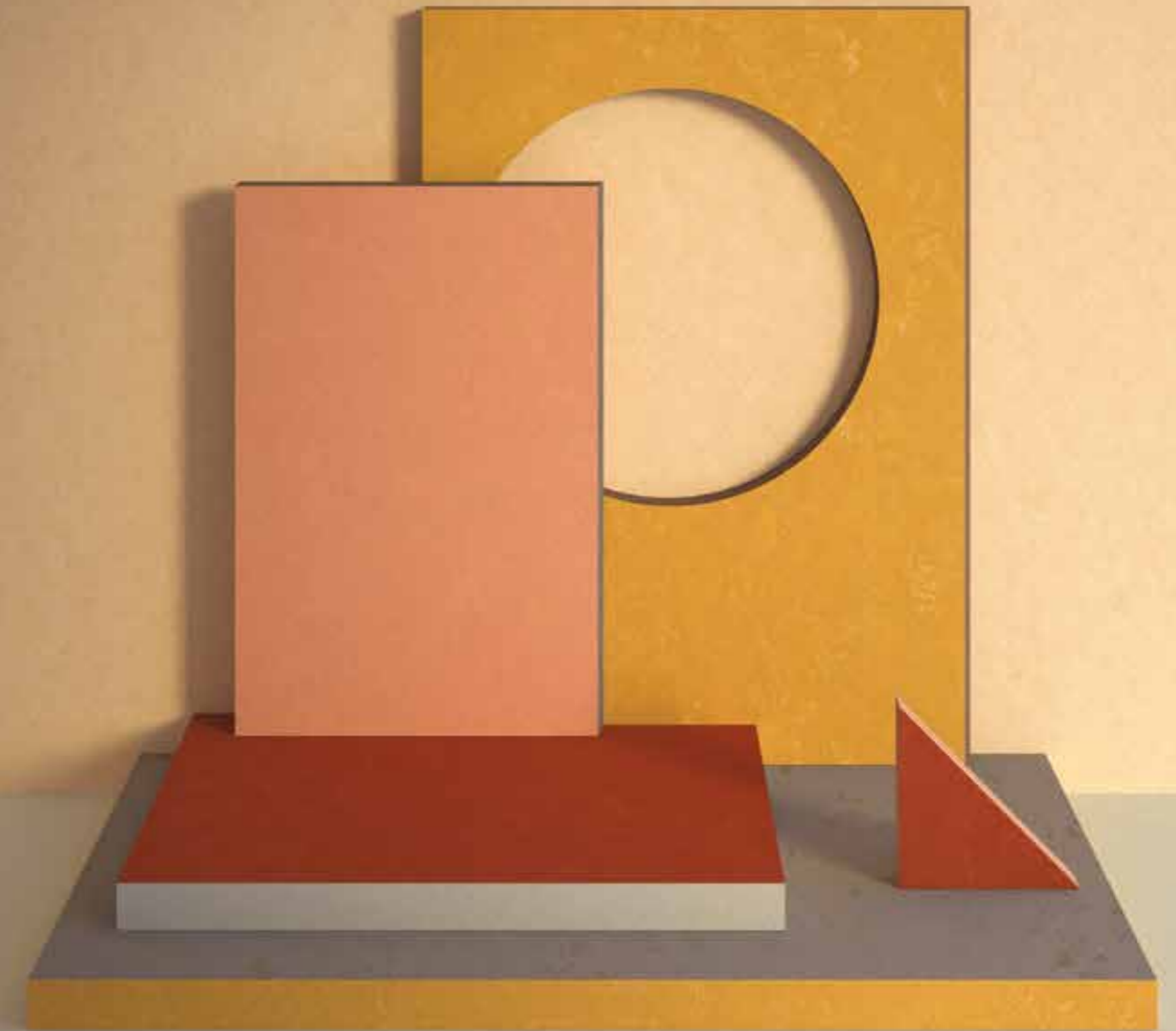
**Granite**  
486 E-2.5  
NCS S7000-N



**Basalt**  
430 E-2.5  
NCS S7010-G90Y



**Carbon**  
409 E-2.5  
NCS S7502-G



- ✓ The only linoleum Cradle to Cradle Certified™ Gold, Originale embodies the essence of Tarkett Lino: authentic, design-focused and sustainable.
- ✓ Inspired by the natural purity of our **100% Linen** design, Originale fuses delicately distinctive patterns with soft colours made from the finest pigments.
- ✓ The unique palette of tone on tone shades takes its cue from nature. Elegant, contemporary and timeless.
- ✓ Originale C2C Certified™ Gold is treated with *Essenza*®, our non-PU acrylic surface protection. Originale is also available with xf2 surface protection and is then C2C Certified™ Silver.



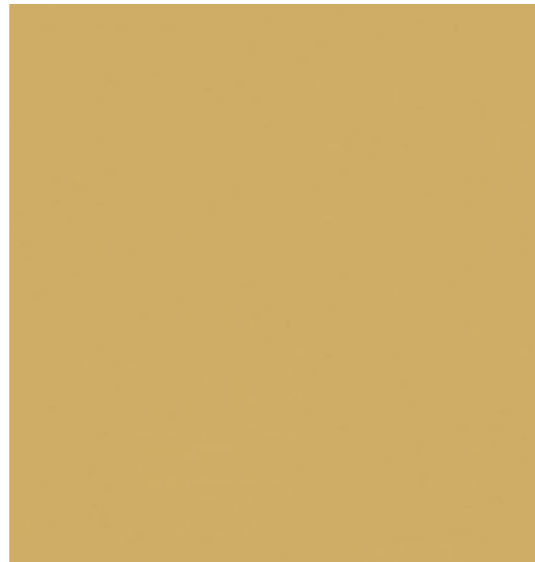
# LinoWall



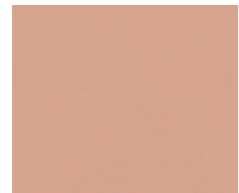
**Cotton**  
122  
NCS S2010-Y20R 2



**Kraft**  
132  
NCS S4030-Y30R 2



**Honey**  
112  
NCS S2040-Y20R 2



**Candy**  
135  
NCS S2030-Y80R 2



**Ginger**  
138  
NCS S4040-Y50R 2



**Denim**  
170  
NCS S4020-B 2



**Metal**  
101  
NCS S3502-Y 2



**Silver**  
103  
NCS S4502-B 2



**Olive**  
155  
NCS S3020-G30Y 2



**Crocodile**  
191  
NCS S5010-G30Y 2



- ✓ The only linoleum approved for use on walls and featuring Bs2-d0 fire certification.
- ✓ Conceived for architects, this completely new collection majors on creativity and versatility.
- ✓ A palette of 10 colours and simple patterns, all designed to coordinate with Etrusco floors.
- ✓ LinoWall comes with our exclusive xf<sup>2</sup>™ surface treatment and is Cradle to Cradle Certified™ Silver.





# Lino Loose-Lay



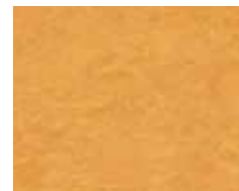
**Veneto  
Terracotta★**  
641  
NCS S2070-Y80R



**Veneto  
Absinthe**  
695  
NCS S3040-G80Y



**Veneto  
100% linen**  
400  
NCS S4020-Y30R



**Veneto  
Sunflower**  
628  
NCS S1070-Y20R



**Veneto  
Burlap**  
911  
NCS S2005-Y40R



**Veneto  
Grey★**  
793  
NCS S2502-Y



**Veneto  
Storm★**  
702  
NCS S3502-Y



**Veneto  
Pebble★**  
604  
NCS S5502-Y



**Veneto  
Aluminium★**  
672  
NCS S4502-G



**Veneto  
Fog**  
703  
NCS S4502-Y



**Veneto  
Pewter**  
685  
NCS S4000-N



**Veneto  
Horizon★**  
663  
NCS S4010-R90B

★ Grands Classiques  
A selection of timeless colours guaranteed in production until 2033



- ✓ Lino Loose-Lay is the natural smart choice and the only linoleum for glue free installation, whether you are choosing flooring for a new building or for renovations in heavy traffic areas of educational and public buildings.
- ✓ Lino Loose-Lay is a bio-based, non-PVC, plasticizer free flooring solution produced sustainably for circular economy, supporting various green building labels and being able to be fully recycled after use.
- ✓ It offers the assurance to withstand like a glue down product, while suitable to be installed on a variety of existing subfloors or damp subfloors (up to 92% RH) reducing down-times & impacts on building daily life to a minimum.
- ✓ All based on the proven lifelong durability of Tarkett Linoleum xf<sup>2</sup> in a selection of best-selling Veneto colours.



# Linoleum xf<sup>2</sup>



**Veneto Absinthe**  
695 E-S-2.5/3.2  
NCS S3040-G80Y



**Style Emme Pear**  
753 2.5  
NCS S3030-G50Y



**Trentino Salt**  
501 2.5  
NCS S3005-G20Y



**Style Emme Carolina**  
760 S-2.5  
NCS S2010-G



**Style Emme Sapphire**  
763 2.5  
NCS S2030-B30G



**Veneto Zinc★**  
671 E-S-2/2.5  
NCS S4502-Y



**Veneto Horizon★**  
663 E-2/2.5/3.2  
NCS S4010-R90B



**Veneto Apple green**  
754 E-2.5  
NCS S2050-G40Y



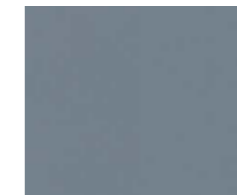
**Style Emme Pistachio**  
758 2.5  
NCS S3010-G20Y



**Style Emme Aqua**  
759 2.5  
NCS S3020-B60G



**Etrusco Sky**  
062 2.5  
NCS S2040-B10G



**Etrusco Denim**  
070 2.5  
NCS S4020-B



**Veneto Lavender**  
670 E-2.5/3.2  
NCS S4020-R90B



**Etrusco Basil**  
056 2.5  
NCS S4030-B90G



**Style Emme Mojito**  
755 2.5  
NCS S2030-G50Y



**Etrusco Olive**  
055 2.5  
NCS S3020-G30Y



**Originale Lichen**  
495 E-2.5  
NCS S4010-G90Y



**Originale Cornflower**  
460 E-2.5  
NCS S4010-B70G



**Veneto Periwinkle**  
761 2.5/3.2  
NCS S3030-B10G



**Style Emme Ice**  
765 2.5  
NCS S4020-B10G



**Veneto Ocean**  
665 E-2.5  
NCS S5030-R90B



**Style Emme Jade**  
797 2.5  
NCS S5020-G



**Style Emme Pine**  
796 S-2.5  
NCS S5030-G30Y



**Veneto Khaki**  
757 E-2.5  
NCS S5010-G70Y



**Etrusco Crocodile**  
091 2.5  
NCS S5010-G30Y



**Etrusco Petrol**  
067 2.5  
NCS S5030-B10G



**Style Emme Prussian**  
766 S-2.5  
NCS S6020-B



**Veneto Midnight**  
768 2.5  
NCS S7020-R70B



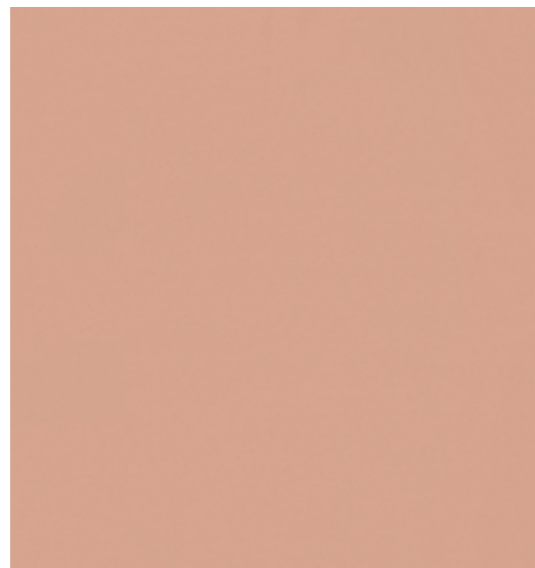
**Veneto Navy**  
688 E-2.5/3.2  
NCS S6030-R80B

★ **Grands Classiques**  
A selection of timeless colours guaranteed in production until 2033

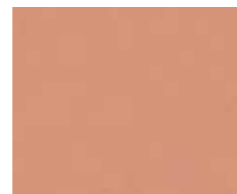
# Linoleum xf<sup>2</sup>



**Style Emme  
Nude**  
723 2.5  
NCS S1515-Y70R



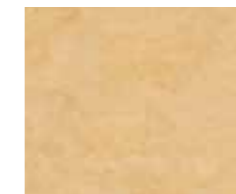
**Etrusco  
Candy**  
035 2.5  
NCS S2030-Y80R



**Originale  
Blossom**  
435 E-2.5  
NCS S3020-Y70R



**Veneto  
Camel★**  
616 E-2.5  
NCS S1020-Y30R



**Veneto  
Eggshell**  
619 E-2.5  
NCS S1020-Y20R



**Veneto  
Ecrú★**  
711 E-2/2.5  
NCS S2010-Y20R



**Originale  
Pearl**  
401 E-2.5  
NCS S 1010-Y30R



**Etrusco  
Blush**  
034 2.5  
NCS S3040-Y80R



**Veneto  
Amber★**  
636 E-2.5/3.2  
NCS S2050-Y40R



**Veneto  
Copper**  
634 2.5  
NCS S2040-Y40R



**Veneto  
Cork★**  
679 E-2/2.5  
NCS S2020-Y20R



**Style Emme  
Tan**  
719 2.5  
NCS S2020-Y20R



**Originale  
Raffia**  
408 E-2.5  
NCS S1515-Y30R



**Style Emme  
Strawberry**  
741 2.5  
NCS S3040-Y90R



**Veneto  
Carmine**  
645 2.5/3.2  
NCS S1580-Y90R



**Veneto  
Terracotta★**  
641 E-2.5/3.2  
NCS S2070-Y80R



**Style Emme  
Fox**  
734 2.5  
NCS S3040-Y50R



**Etrusco  
Ginger**  
038 2.5  
NCS S4040-Y50R



**Veneto  
Sunflower**  
628 E-S-2.5/3.2  
NCS S1070-Y20R



**Veneto  
Corn★**  
612 E-2.5  
NCS S2040-Y10R



**Style Emme  
Gold**  
728 2.5  
NCS S2040-Y20R



**Veneto  
Crimson**  
740 2.5  
NCS S3060-R



**Style Emme  
Berry**  
743 2.5  
NCS S5030-R



**Veneto  
Raspberry**  
945 E-2.5  
NCS S4040-Y90R



**Originale  
Hematite**  
440 E-2.5  
NCS S4040-Y70R



**Originale  
Sienna**  
434 E-2.5  
NCS S4050-Y30R



**Originale  
Ochre**  
428 E-2.5  
NCS S3040-Y30R



**Etrusco  
Honey**  
012 2.5  
NCS S2040-Y20R



**Style Emme  
Cinnamon**  
731 2.5  
NCS S5020-Y50R

★ Grands Classiques  
A selection of timeless colours guaranteed in production until 2033

# Linoleum xf<sup>2</sup>



**Veneto Sisal★**  
611 E-2/2.5/3.2  
NCS S2020-Y20R



**Style Elle Palladino**  
390 2.5  
NCS S2010-Y30R



**Etrusco Cotton**  
022 2.5  
NCS S2010-Y20R



**Veneto Burlap**  
911 2/2.5  
NCS S2005-Y40R



**Veneto Ivory**  
601 E-2.5  
NCS S2005-Y10R



**Originale Foam**  
402 E-S-2.5  
NCS S2502-Y



**Style Emme Koala**  
794 2.5  
NCS S2502-Y



**Style Elle Sabbia**  
308 2.5  
NCS S1515-Y30R



**Veneto Silk**  
625 2/2.5  
NCS S3010-Y30R



**Style Emme Cenere**  
201 2.5  
NCS S3005 Y20R



**Veneto Storm★**  
702 E-S-2/2.5  
NCS S3502-Y



**Veneto Fog**  
703 S-2/2.5  
NCS S4502-Y



**Style Emme Cemento**  
202 S-2.5  
NCS S3502-Y



**Veneto 100% linen**  
400 E-S-2.5/3.2  
NCS S4020-Y30R



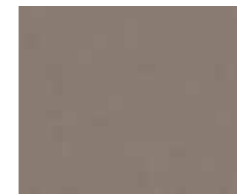
**Etrusco Kraft**  
032 2.5  
NCS S4030-Y30R



**Style Emme Tobacco**  
730 2.5  
NCS S4010-Y50R



**Veneto Taupe dark**  
714 2.5  
NCS S4005-Y20R



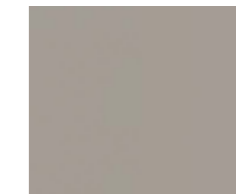
**Style Emme Velluto**  
203 2.5  
NCS S5005-Y20R



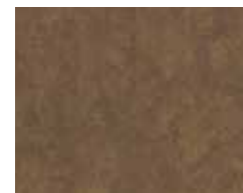
**Style Elle Velluto**  
303 S-2.5  
NCS S5005-Y20R



**Originale Cliff**  
485 E-2.5  
NCS S5000-N



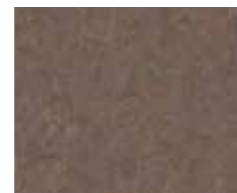
**Etrusco Shark**  
004 2.5  
NCS S4502-Y



**Originale Clay**  
431 E-2.5  
NCS S6010-Y30R



**Style Elle Chestnut**  
451 2.5  
NCS S6010-Y30R



**Style Emme Cedar**  
732 2.5  
NCS S6010-Y50R



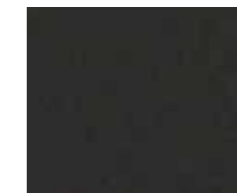
**Originale Pepper**  
473 E-S-2.5  
NCS S6005-Y80R



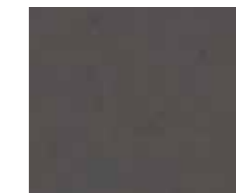
**Style Elle Nutmeg**  
450 2.5  
NCS S7010-G90Y



**Originale Basalt**  
430 E-2.5  
NCS S7010-G90Y



**Originale Carbon**  
409 E-2.5  
NCS S7502-G



**Originale Granite**  
486 E-2.5  
NCS S7000-N

# Linoleum xf<sup>2</sup>



**Veneto Grey**★  
793 E-2/2.5/3.2  
NCS S2502-Y



**Veneto Platinum**  
684 S-2.5  
NCS S2502-Y



**Veneto Pewter**  
685 S-2.5  
NCS S4000-N



**Trentino Cloud**  
505 2.5  
NCS S5502-B



**Etrusco Metal**  
001 2.5  
NCS S3502-Y



**Veneto Aluminium**★  
672 E-2/2.5/3.2  
NCS S4502-G



**Style Emme Ferro**  
205 2.5  
NCS S5502-Y



**Veneto Pebble**★  
604 E-S-2/2.5  
NCS S5502-Y



**Etrusco Silver**  
003 2.5  
NCS S4502-B



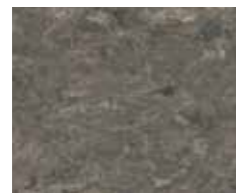
**Veneto Steel**★  
673 E-2/2.5/3.2  
NCS S6000-N



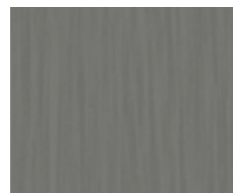
**Veneto Stone**  
692 E-S-2.5  
NCS S6502-G



**Veneto Graphite**★  
906 E-S-2/2.5  
NCS S7500-N



**Veneto Smoke**★  
608 E-S-2/2.5  
NCS S6502-Y



**Style Elle Ferro**  
305 2.5  
NCS S5502 Y



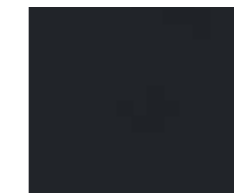
**Trentino Grey pepper**  
503 2.5  
NCS S6500-N



**Veneto Concrete**  
686 S-2.5  
NCS S6005-R80B



**Veneto Slate**★  
674 E-S-2.5/3.2  
NCS S8502-B



**Etrusco Black**  
098 2.5  
NCS S8502-B

# MODERN SUSTAINABILITY

## Modern sustainable choice for people and the environment

Tarkett Lino has been made the same way since 1898 and yet it continues to be a modern, versatile and sustainable form of flooring, made of natural, renewable materials like linseed oil, pine rosin, wood and cork flour and jute. Our Cradle to Cradle Certified™ approach ensures we design our products to positively contribute to the environment and people's well-being at each step of the product's life, while supporting the transition to a circular economy.

As a result, **our 2.5mm Tarkett Lino is carbon-negative from 'cradle to gate'**, including raw material extraction, transport and linoleum production.\*

Use of recycled materials, our ReStart® take-back and recycling programme and environmental credentials contribute towards green-building certifications such as BREEAM, LEED, WELL and HQE.



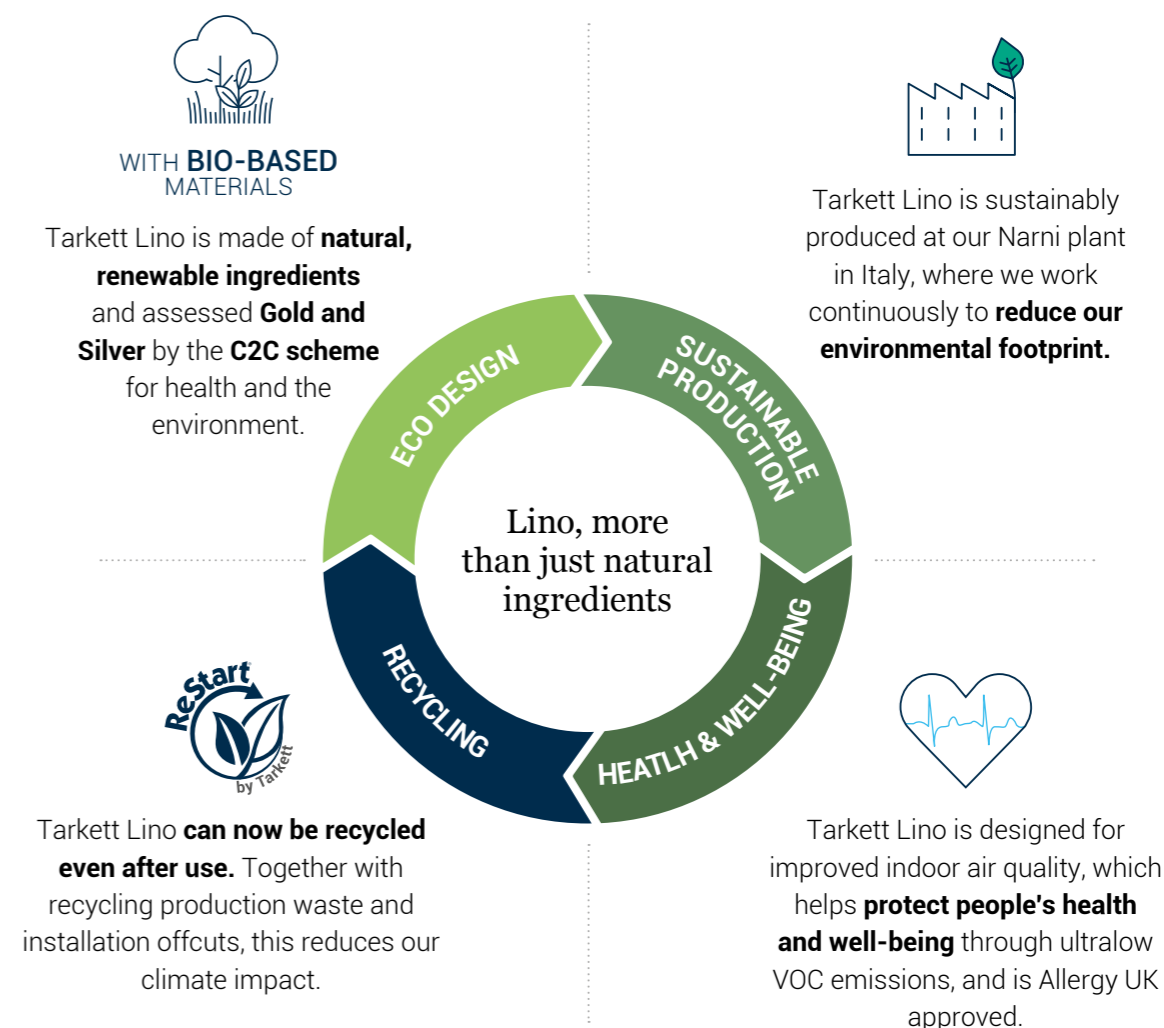
Cradle to Cradle Certified™ is the world's most advanced science-based, multi-attribute certification program for designing, making and verifying materials and products that are safe, circular and responsibly made.

Cradle to Cradle Certified™ products are awarded certification based upon their performance across five critical areas of sustainability: Material Health, Product Circularity, Clean Air & Climate Protection, Water & Soil Stewardship, and Social Fairness.

Our Originale Essenza+ Collection is the the only Cradle to Cradle Certified™ Gold linoleum on the market and offers the best sustainable credentials in our Lino range.

\*EPD N°4789356590.101.2

Lino is a durable product manufactured in a green factory from carefully selected natural materials. It is also recyclable, even post-use now, into new raw materials to produce new floorings. As a result, our 2.5mm Tarkett Lino has the smallest environmental footprint in its category throughout its lifecycle\*.





## Eco design

In making Tarkett Lino, we use materials that contribute positively to people's health and the environment. The closed-loop system starts here, so that good materials become future resources that can be reused:

- Our Originale and Veneto Essenza+ 100% linen are **C2C Certified™ Gold** (the only linoleum to achieve this level). The rest of the collection is C2C Silver Certified™.

**76%** of bio-sourced materials.

Up to **97%** natural raw materials - linseed oil, pine rosin, wood and cork flour, calcium carbonate and jute.

Up to **77%** from abundant renewable resources - including local suppliers.

**100%** of ingredients have been positively assessed according to the **Cradle Certified™** scheme for health and the environment.

**100%** recyclable - Tarkett Lino can be recycled into raw materials for future products or packaging.

**30** years Tarkett Lino is a durable product with a **lifespan of up to 30 years**, as stated in its Environmental Product Declaration\*.



## Sustainable production

Our world-class manufacturing programme drives us to continuously improve our processes, enabling us to reduce our operational impact and preserve the environment.

**100%** renewable electricity.

**100%** recycled / recirculated industrial water in a closed-loop system. Rainwater is also collected and re-used.

**34%** of our energy is self-generated. We produce power from a trigeneration system to increase energy efficiency in an economic, sustainable way. We also use photovoltaic panels, a biomass boiler and a geothermal energy system.

**0%** production waste goes to landfill.

**60%** reduction in our greenhouse-gas emissions vs 2010 (equivalent to driving a car 1000 times around the world).

- Pioneering the SA 8000 Social Accountability and ISO 37001 Anti-Bribery Management Systems, in addition to existing ISO9001 quality, ISO14001 environment, ISO50001 energy and ISO 45001 Occupational Health and Safety Management Systems.



## Recycling

That way, it can be turned into new products and positively impact our carbon footprint.

- Our dedicated **ReStart® take-back and recycling programme** offers: post-installation and **now post-use recycling**.
- Tarkett Lino is **100% recyclable**.
- **By recycling 750 tons of linoleum annually, we reduce our impact on climate change:** total greenhouse-gas savings of 7.1kg of CO<sub>2</sub> eq/sqm (installation waste recycling) and 5.4kg of CO<sub>2</sub> eq/sqm (post-use waste recycling).
- **Recycled materials** such as linoleum powder, cork and wood flour **make up 36%** of Tarkett Lino's composition, helping to reduce raw-material inputs.



## Health & well-being

We create flooring designed for improved indoor air quality, which helps to protect people's health and well-being.

- **Optimal indoor air quality with all our floor- and wall coverings:** ultra low VOC emissions ( $\leq 10\mu\text{g}/\text{m}^3$ ) 100 times lower than the most stringent industry requirements.
- **Naturally phthalate-free.**
- **Naturally inhibiting bacterial growth.** Tarkett Lino has naturally anti-bacterial properties against the most common bacteria, such as E-coli and MRSA.
- **Approved by Allergy UK: Allergy UK's assessment** proved that, if cleaned and maintained as recommended, Tarkett Lino helps with the removal of allergens such as house dust mites, pollen, cat and dog hair, mould and fungi.
- **We offer solutions for insulation and sound-proofing**, reducing energy loss and noise pollution.

### Providing transparent information

For our Lifecycle Assessment we work with our main partners and relevant authorities, focusing on:

- **Responsible sourcing:** all our suppliers must meet quality, cost, environmental and social- accountability criteria.
- **ReStart® take-back and recycling programme:** our Narni plant in Italy aims to increase the proportion of post-installation, and now post-use, waste that it recycles.

\* Based on an installation performed by a professional installer, trained by Tarkett and following the Lino specifications.

# MODERN PERFORMANCE

## A hard-wearing solution over its lifetime

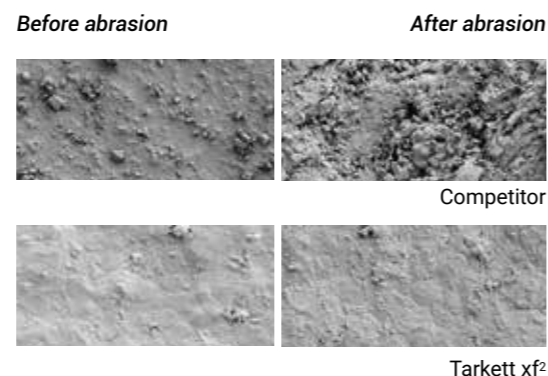
For 150 years, linoleum flooring has been appreciated for its natural beauty, comfort, durability and versatility in most interior environments. Tarkett was an early innovator in surface treatments, with the xf<sup>2</sup> technology added to its linoleum, to improve resistance and simplify maintenance for significant cost savings in daily cleaning and care.

### xf<sup>2</sup> for excellent performance

- Micro-reinforced polyurethane UV treatment seals and hardens the surface to make it more resistant to dirt, daily wear and tear.
- No need for polish, stripping and polymer waxing over the lifetime of the surface\*.

### Superior resistance to abrasion and chemicals

This protective layer can be affected during use (by traffic), which we simulated with an abrasion test. The results show that a typical competitor's product is damaged after abrasion, while **Tarkett xf<sup>2</sup> is still intact and resistant to chemicals.**



### NEW improved xf<sup>2</sup> welding rods

Our new welding rods are easier to install and offer excellent resistance to all kinds of soiling and abrasion for more effective cleaning.

### Simplifying cleaning and maintenance

xf<sup>2</sup> Lino's reinforced surface treatment makes polish, stripping and polymer waxing unnecessary over the product's lifetime\*. This means cleaning and maintenance become less frequent and less intense, reducing the use of water, energy and detergents for a smaller environmental footprint.

### xf<sup>2</sup> Lino's lower lifecycle cost

The initial investment and installation charges normally account for just a small proportion of a flooring's total lifecycle cost. The rest is cleaning and maintenance. As xf<sup>2</sup> Lino requires no surface treatment after installation and no wax or polish over its lifetime, the total lifecycle cost is significantly lower. Compared with other treated linoleum flooring, payback on the extra investment can be achieved within two years.

### NEW! Lino Loose-Lay

**Tarkett Lino Loose-Lay is the natural smart choice for quicker glue free installation.**

It is the perfect solution for fast renovation for all demanding areas, reducing downtimes and impacts on building day life to a minimum. No relaxation time nor drying time needed. The loose-lay technology offers the assurance to withstand like a glue down product, while suitable to be installed on a variety of existing subfloors or damp subfloors (up to 92% RH). It also gives 14dB impact sound reduction and the proven lifelong durability of Tarkett Lino xf<sup>2</sup>.

\* Provided soil barriers are correctly put in place, regular maintenance is carried out, furniture legs have appropriate coverings and daily inspections are performed.

For more information, please contact your Tarkett representative.



# CLEANING & MAINTENANCE

## xf<sup>2</sup> cleaning and maintenance: no polish, no wax\*

Modern cleaning protocols aim to reduce the amount of wet cleaning, replacing it with drier cleaning techniques, like the use of centrally laundered, pre-impregnated mops and more efficient machinery. This makes work easier and more effective for cleaning staff. It also reduces the environmental impact, with less need for fresh water or detergents.

### Initial site cleaning



After installation, the site must be vacuum-cleaned, swept or damp-mopped to remove building dust and loose dirt. A combined scrubber/dryer with brushes or red pads cleans large areas very effectively. Use detergent with a low pH (3-5). xf<sup>2</sup>'s surface treatment will easily withstand this kind of cleaning.

### Daily and regular cleaning



Remove dust and dirt with dry or pre-impregnated yarn, microfibre or disposable mops. Alternatively, use a vacuum cleaner. Marks can be wiped off by a damp mop, either with water or a detergent solution. Ensure the floor is dry of water or fluid within 15-20 seconds of cleaning. If necessary, spray clean using a rotary cleaner equipped with red pads.

Sharp-edged or poorly maintained furniture feet, sand, pebbles and repeated movements over a specific area will damage any type of flooring over time.

### Periodic cleaning



Combined machine: use diluted neutral detergent. Speed low 150-250 rpm or higher. Red/brown pads are usually most suitable.

or



Machine scrubbing + wet vacuuming

- Apply a cleaning solution (fairly strong, pH 10-11, after dilution) and leave to act for 5-10 mins.
  - Clean the floor using a heavy-duty single disc scrubbing machine (red pad).
- Vacuum up the dirty water immediately.
- Rinse with clean water and allow the floor to dry.

Essenza<sup>+</sup> surface protection requires specific cleaning and maintenance procedures. Please check our website.

\* Provided that soil barriers are correctly put in place, regular maintenance is carried out, furniture legs have appropriate coverings and daily inspections are performed.



## Training

We provide a range of on-demand training courses for distributors, installers and maintenance teams on Tarkett products, general installation and maintenance techniques, as well as site-specific installation. We can deliver these courses worldwide in our training facilities, like our Narni plant, or at customer sites. Our international technical advisers can also provide support at the start of installation or building projects.

For more information, contact your Tarkett representative.

LinoWall candy 135 / Originale carbon 409

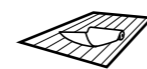
# VERSATILE USE



## Natural yellowing effect

Once unpacked and as a result of the natural production process, linoleum sometimes comes with a slightly yellow surface film. The yellow tint will disappear progressively within 24 hours of exposure to sunlight. The phenomenon is reversible and the yellow film might reappear in areas covered by furniture or other objects. It will of course disappear again once exposed to daylight.

Originale Ochre 428 / LinoWall Honey 112



## NEW! Lino Loose-Lay

### The only loose-lay linoleum

The natural smart choice for glue free installation, whether you are choosing flooring for a new building or for renovations in heavy traffic areas of educational and public buildings. Product available in rolls.



## SD Static Dissipative xf<sup>2</sup>

A safe, sustainable flooring designed for static control near computer, electronic and telecommunications equipment in medical, manufacturing, education and industry environments. Available in rolls and pre-cuts for raised floors.



## Conductive xf<sup>2</sup>

### The only conductive linoleum

A safe and sustainable flooring designed for stable and reliable conductive control. The natural solution for education, healthcare and office environments, especially for areas like server and computer rooms, laboratories and around electronic equipment. Available in rolls and pre-cuts for raised floors.



## Silencio xf<sup>2</sup>

### Acoustic solution - 19dB - 3.8mm

2.5mm linoleum with jute backing and recycled polyurethane foam underlayer, giving an excellent sound reduction of 19dB. Available in rolls and pre-cuts for raised floors.



## Veneto Acoustic Cork xf<sup>2</sup>

### Acoustic solution - 15dB - 4.4mm

2.5mm linoleum with natural Elafono (cork underlayer) giving excellent sound reduction of 15dB. Product available on demand, in rolls in all Veneto colours.



## Elafono

### Acoustic solution - up to 15dB

2.0mm traditional, 100% natural, corkment underlay installed in combination with any compact Tarkett Lino for added sound reduction (up to 15dB, depending on the product). Available in rolls.



## Veneto Sicuro xf<sup>2</sup>

### Slip-resistance - R10 rating - 2.5mm

R10 Slip-resistance rating: combines secure grip with xf<sup>2</sup>'s ease of cleaning. Ideal for building entrances.

Product available on demand, in rolls and 608 x 608 mm pre-cuts for raised floors, in all Veneto colours.



## Linoleum Bfl 2.5mm xf<sup>2</sup>

### Flame-retardant solution

2.5mm linoleum featuring Bfl fire rating without flame retardants. The Bfl rating is achieved by natural component materials. Ideal for evacuation routes.

Product available on demand in rolls and 608 x 608 mm pre-cuts for raised floors, in all xf<sup>2</sup> designs and colours.

## Essenza<sup>+</sup>

### 2.5mm

The traditional non-PU, factory applied finish, ready to walk on, with improved durability. Available in rolls.

## Pre-cuts for raised floors

### 608 x 608 mm

Linoleum pre-cuts ready for use. Designed for raised floors, they are available on request in all compact and acoustic xf<sup>2</sup> colours and designs.

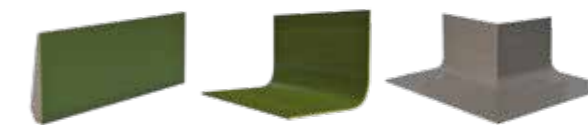
## Sport, marine and rail application

Tarkett Lino is also suitable for sport, marine and rail application. Check our website.

## Finishing accessories

### Linoleum set-on skirtings (SOS) and Linoleum set-in skirtings (SIS)

Available in several options.



Lino SOS

Lino SIS

Lino SIS outer angle

# HERITAGE

The Tarkett Lino plant celebrates its 125<sup>th</sup> anniversary in 2023.



The Tarkett linoleum plant at Narni (Italy), easily recognisable by its distinctively shaped ovens building, began producing linoleum at the end of the 19<sup>th</sup> century. The plant represented one of the region's earliest industries, shaping the development of Narni and the surrounding area.



## Traditional flooring made in Italy

One of Italy's smallest regions, Umbria lies directly in the centre of Italy. The Tarkett linoleum plant started production in Narni in the late 19<sup>th</sup> century, when European countries commonly used linoleum for flooring and wall-coverings. By the 1920s, there were around 100 sites making linoleum. In the early 1990s, Tarkett began modernising the entire production process. Today, Narni is accredited ISO 9001 Quality System and holds important environmental certifications including ISO 14001, ISO 50001, ISO 45001 Occupational Health and Safety Management Systems SA 8000 Social Accountability, ISO 37001 Anti-Bribery Management Systems, the Nordic Swan Ecolabel and Der Blaue Engel.

Tarkett is a global player, exporting more than 90% of its linoleum across the world.

## Tradition and innovation

Mindful of the environment, we have innovated and improved our manufacturing practices to reduce our operational impact. As a result, Tarkett Lino is a flooring solution that blends craftsmanship with the most advanced technology.



TRENTINO	Colour name	Colour reference	Trentino xf² 2.5mm	Trentino Br. xf² 2.5mm ON REQUEST	NCS code LINOLEUM	Uni Color Welding Rod 4mm	NCS code Uni Color Welding Rod	LRV	
								L	LRV of a surface**
	salt	501	14602501	14128501	S3005-G20Y	14009793	G3030-G40Y	66,67	36%
	grey pepper	503	14602503	14128503	S6500-N	14009207	S7005-G50Y	41,61	12%
	cloud	505	14602505	14128505	S5502-B	14009673	S6502-B	52,2	20%

ORIGINALE	Colour name	Colour reference	Originale Essenza² 2.5mm	Originale xf² 2.5mm	Originale Spices² xf² 3.8mm	Bfl xf² 2.5mm ON REQUEST	NCS code LINOLEUM	Uni Color Welding Rod 4mm	NCS code Uni Color Welding Rod	LRV	
										L	LRV of a surface**
	100% linen	400	see Veneto	see Veneto		see Veneto	S 4020-Y30R	14009400	S4020-Y30R	59,18	27%
	pearl	401	14042401	14142401		14138401	S 1010-Y30R	14009700	S1010-Y30R	83,62	63%
	foam	402	14042402	14142402	14232402	14138402	S 2502-Y	14009002	S3010-G70Y	73,62	46%
	raffia	408	14042408	14142408		14138408	S 1515-Y30R	14009619	S2020-Y20R	78,26	54%
	carbon	409	14042409	14142409		14138409	S 7502-G	14009098	S8502-B	32,03	7%
	ochre	428	14042428	14142428		14138428	S 3040-Y30R	14009428	S 3040-Y20R	59,85	28%
	basalt	430	14042430	14142430		14138430	S 7010-G90Y	14009430	S6502-Y	36,24	9%
	clay	431	14042431	14142431		14138431	S 6010-Y30R	14009524	S7010-Y30R	42,38	13%
	sienna	434	14042434	14142434		14138434	S 4050-Y30R	14009434	S3050-Y50R	54,68	23%
	blossom	435	14042435	14142435		14138435	S 3020-Y70R	14009435	S3020-Y60R	64,48	33%
	hematite	440	14042440	14142440		14138440	S 4040-Y70R	14009945	S4040-Y80R	45,93	15%
	cornflower	460	14042460	14142460		14138460	S 4010-B70G	14009460	S4020-B50G	55,42	23%
	pepper	473	14042473	14142473	14232473	14138473	S 6005-Y80R	14009473	S6005-Y80R	46,69	16%
	cliff	485	14042485	14142485		14138485	S 5000-N	14009692	S5502-G	57,69	26%
	granite	486	14042486	14142486		14138486	S 7000-N	14009906	S6005-B20G	40,22	11%
	lichen	495	14042495	14142495		14138495	S 4010-G90Y	14009495	S5010-G90Y	56,75	25%

LINOWALL	Colour name	Colour reference	Linowall xf² 2mm - 2m	Linowall xf² 2mm - 1m ON REQUEST	NCS code LINOLEUM	Uni Color Welding Rod 4mm (14009)	NCS code Uni Color Welding Rod	LRV	
								L	LRV of a surface**
	metal	101	14110101	14011101	S3502-Y	14009001	S3005-G80Y	67,47	37%
	silver	103	14110103	14011103	S4502-B	14009692	S5502-G	54,85	23%
	honey	112	14110112	14011112	S2040-Y20R	14009012	S2050-Y20R	69,32	40%
	cotton	122	14110122	14011122	S2010-Y20R	14009700	S1010-Y30R	77,03	52%
	kraft	132	14110132	14011132	S4030-Y30R	14009032	S4020-Y40R	57,37	25%
	candy	135	14110135	14011135	S2030-Y80R	14009435	S3020-Y60R	65,8	35%
	ginger	138	14110138	14011138	S4040-Y50R	14009734	S3040-Y50R	51,51	20%
	olive	155	14110155	14011155	S3020-G30Y	14009055	S3020-G40Y	67,19	37%
	denim	170	14110170	14011170	S4020-B	14009765	S4030-B	54,54	22%
	crocodile	191	14110191	14011191	S5010-G30Y	14009091	S5010-G30Y	55,09	23%

\*\*LRV of a surface = p-value (rho)  $\rho=100 \times ((L+16)/116)^3$

STATIC DISSIPATIVE	Colour name	Colour reference	Linoleum SD Static Dissipative xf² - 2.5mm	NCS code LINOLEUM	Uni Color Welding Rod 4mm	NCS code Uni Color Welding Rod	LRV	
							L	LRV of a surface**
	dark grey	808	14994808	S8000-N	14009098	S8502-B	45,05	15%
	plumb grey	892	14994892	S6502-G	14009692	S5502-G	35,9	9%

CONDUCTIVE	Colour name	Colour reference	Linoleum Conductive xf² 2.5mm	NCS code LINOLEUM	Uni Color Welding Rod 4mm	NCS code Uni Color Welding Rod	LRV	
							L	LRV of a surface**
	dark grey	808	14992808	S8000-N	14009098	S8502-B	45,05	15%

UNDERLAYERS	Colour name	Colour reference
		ELAFONO

# Latest references

For more references, check our website.



**Erasmus Riedberg Day Care Centre**  
**RIEDBERG, FRANKFURT, GERMANY**  
Style Emme Silencio xf<sup>2</sup>™ 19dB

**Public High School**  
**NORT-SUR-ERDRE, FRANCE**  
**Architect: Céline Leduby of AIA Life Designers**  
Veneto xf<sup>2</sup>™ / Trentino xf<sup>2</sup>™ / Style Emme xf<sup>2</sup>™

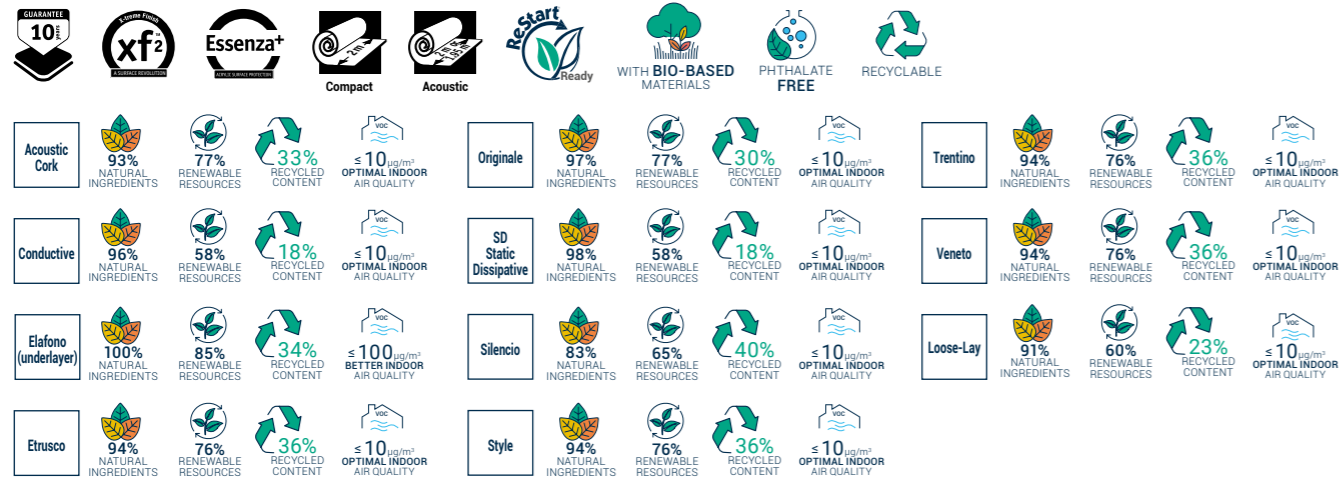
# Technical data

CERTIFICATION & CLASSIFICATION	STANDARDS	Veneto xf <sup>2</sup> 2mm	Veneto xf <sup>2</sup> , Style Emme xf <sup>2</sup> , Style Elle xf <sup>2</sup> , Etrusco xf <sup>2</sup> , Trentino xf <sup>2</sup> , Originale xf <sup>2</sup> 2.5mm	Linoleum xf <sup>2</sup> B <sub>n</sub> 2.5mm ON REQUEST	Originale Essenza*, Veneto Essenza* 2.5mm
CE certification	EN 14041	Yes	Yes	Yes	Yes
Classification	EN ISO 10874: Domestic/ Commercial/Light industrial	Classes: 23/32/41	Classes: 23/34/43	Classes: 23/34/43	Classes: 23/34/43
<b>TECHNICAL CHARACTERISTICS</b>					
<b>STANDARDS</b>					
Surface treatment		xf <sup>2</sup>	xf <sup>2</sup>	xf <sup>2</sup>	Essenza*
Total thickness	EN ISO 24346	2.0 mm	2.5 mm	2.5 mm	2.5 mm
Total weight	EN ISO 23997	ca. 2 300 g/m <sup>2</sup>	ca. 2 900 g/m <sup>2</sup>	ca. 3 200 g/m <sup>2</sup>	ca. 2 900 g/m <sup>2</sup>
Residual indentation	EN ISO 24343-1 Standard requirements Average measured value	≤ 0.15 mm ca. 0.07 mm	≤ 0.15 mm ca. 0.08 mm	≤ 0.15 mm ca. 0.08 mm	≤ 0.15 mm ca. 0.08 mm
Flexibility	EN ISO 24344 Method A	≤ 25 mm Ø	≤ 30 mm Ø	≤ 30 mm Ø	≤ 30 mm Ø
Form of delivery	EN ISO 24341	≤ 32 x 2 m	≤ 32 x 2 m	≤ 16 x 2 m	≤ 32 x 2 m
<b>TECHNICAL PERFORMANCES</b>					
<b>STANDARDS</b>					
Furniture leg resistance	EN ISO 16581	-	-	-	-
Curl resultant to heat	EN ISO 23999	-	-	-	-
Dimensional stability	EN ISO 23999 EN 669	-	-	-	-
Fire classification	EN 13501-1	C <sub>fl</sub> -s1	C <sub>fl</sub> -s1	B <sub>fl</sub> -s1	C <sub>fl</sub> -s1
Fire effluent toxicity	ISO 5659-2 (evaluation according to EN 45545-2 Annex C)	-	-	-	-
Impact sound reduction	EN ISO 10140-3 / EN ISO 717-2	5 dB	6 dB	5 dB	6 dB
Impact sound in the room	NF S31-074	Class C < 85 dB	Class C < 85 dB	Class C < 85 dB	Class C < 85 dB
Impact sound reduction with Elafono*	EN ISO 10140-3 EN ISO 717-2	14 dB	14 dB	14 dB	14 dB
Castor chair	EN ISO 4918	Suitable for office chairs with castors type W (Norm EN 12529)			
Static electrical propensity	EN 1815	< 2 kV	< 2 kV	< 2 kV	< 2 kV
Electrical resistance	EN 1081	-	-	-	-
	ESD-approval SP method 2472	-	-	-	-
	EN/IEC 61340-4-1	-	-	-	-
		-	-	-	-
Impact resistance	EN 259-2	-	-	-	-
Slip resistance	EN 13893 DIN 51130	DS: ≥ 0.30 R9	DS: ≥ 0.30 R9	DS: ≥ 0.30 R9	DS: ≥ 0.30 R9
Chemical resistance	EN ISO 26987	Resistant to dilute acids, oils, facts, current solvents and alkalis		Resistant to dilute acids, oils, facts, current solvents and alkalis and hydrogen peroxide based disinfectants recommended by EPA/WHO	Resistant to dilute acids, oils, facts, current solvents and alkalis
Thermal resistance Underfloor heating	EN ISO 10456	0.17 W/(m <sup>2</sup> K) Suitable	0.17 W/(m <sup>2</sup> K) Suitable	0.17 W/(m <sup>2</sup> K) Suitable	0.17 W/(m <sup>2</sup> K) Suitable
Light fastness	EN ISO 105-B02	≥ 6	≥ 6	≥ 6	≥ 6
Spongeability, washability and extra washability	EN 12956 EN 233	-	-	-	-
Determination of antibacterial activity	ISO 22196	Tarkett Lino has naturally anti-bacterial properties against the most common bacteria, such as E-coli and MRSA			
Colours		15	105	ON REQUEST 105	45
<b>SUSTAINABILITY PERFORMANCES</b>					
<b>STANDARDS</b>					
EPD	ISO 14025	Yes	Carbon negative from cradle to gate (A1-A3)		
Renewable electricity		100%	100%	100%	100%

ISO 24011 (EN 548) **One single layer** calendered linoleum on jute backing  
EN 686 Linoleum on a foam backing  
EN 687 Linoleum on a corkment backing

Veneto Sicuro xf <sup>2</sup> R10 2.5mm ON REQUEST	Linoleum Conductive xf <sup>2</sup> 2.5mm	Linoleum SD Static Dissipative xf <sup>2</sup> 2.5mm	Veneto xf <sup>2</sup> 3.2mm	Silencio xf <sup>2</sup> 3.8mm - 19dB	Veneto Acoustic Cork xf <sup>2</sup> 4.4mm - 15dB ON REQUEST	<b>NEW</b> Veneto Loose-Lay xf <sup>2</sup> 4.3mm ON REQUEST	LinoWall 2mm
Yes	Yes	Yes	Yes	Yes	Yes	Yes	EN 15102
Classes: 23/34/43	Classes: 23/34/43	Classes: 23/34/43	Classes: 23/34/43	Classes: 23/33/41	Classes: 23/34/42	Classes: 23/34/42	-
xf <sup>2</sup>	xf <sup>2</sup>	xf <sup>2</sup>	xf <sup>2</sup>	xf <sup>2</sup>	xf <sup>2</sup>	xf <sup>2</sup>	xf <sup>2</sup>
2.5 mm	2.5 mm	2.5 mm	3.2 mm	3.8 mm	4.4 mm	4.3 mm	2.0 mm
ca. 2 900 g/m <sup>2</sup>	ca. 2 900 g/m <sup>2</sup>	ca. 2 900 g/m <sup>2</sup>	ca. 3 800 g/m <sup>2</sup>	ca. 3 350 g/m <sup>2</sup>	ca. 4 500 g/m <sup>2</sup>	ca. 5 000 g/m <sup>2</sup>	ca. 2 900 g/m <sup>2</sup>
≤ 0.15 mm ca. 0.08 mm	≤ 0.15 mm ca. 0.08 mm	≤ 0.15 mm ca. 0.08 mm	≤ 0.15 mm ca. 0.10 mm	≤ 0.30 mm ca. 0.20 mm	≤ 0.40 mm ca. 0.25 mm	≤ 0.40 mm ca. 0.25 mm	-
≤ 30 mm Ø	≤ 30 mm Ø	≤ 30 mm Ø	≤ 40 mm Ø	≤ 30 mm Ø	≤ 30 mm Ø	≤ 30 mm Ø	-
≤ 32 x 2 m	≤ 32 x 2 m	≤ 32 x 2 m	≤ 32 x 2 m	≤ 32 x 2 m or ≤ 32 x 1.95 m*	≤ 16 x 2 m or ≤ 16 x 1.95 m*	≤ 16 x 2 m or ≤ 16 x 1.95 m*	≤ 16 x 2 m / on demand cut at 1 m
-	-	-	-	-	-	Foot Type 2: no damage	-
-	-	-	-	-	-	≤ 2 mm	-
-	-	-	-	-	-	≤ 0.15% ≤ 0.04%	-
C <sub>fl</sub> -s1	B <sub>fl</sub> -s1	C <sub>fl</sub> -s1	C <sub>fl</sub> -s1	C <sub>fl</sub> -s1	C <sub>fl</sub> -s1	C <sub>fl</sub> -s1**	B-s2 d0
-	-	-	-	-	-	-	***
6 dB	6 dB	6 dB	8 dB	19 dB	15 dB	14 dB	-
Class C < 85 dB	Class C < 85 dB	Class C < 85 dB	Class B < 75 dB	Class A < 65 dB	Class B < 75 dB	Class B ≤ 75 dB	-
14 dB	Not applicable	Not applicable	15 dB	Not applicable	Not applicable	Not applicable	-
Suitable for office chairs with castors type W (Norm EN 12529)							
< 2 kV	< 2 kV	< 2 kV	< 2 kV	< 2 kV	< 2 kV	< 2 kV	< 2 kV
-	R1 ≤ 10 <sup>9</sup> Ω R2 ≤ 10 <sup>9</sup> Ω	R1 ≤ 10 <sup>9</sup> Ω R2 ≤ 10 <sup>9</sup> Ω	-	-	-	-	-
-	R ≤ 10 <sup>9</sup> Ω	1x10 <sup>9</sup> < R < 1x10 <sup>10</sup> Ω	-	-	-	-	-
-	R ≤ 10 <sup>9</sup> Ω	R ≤ 10 <sup>9</sup> Ω	-	-	-	-	-
-	-	-	-	-	-	-	Resistant to impacts
DS: ≥ 0.30 R10	DS: ≥ 0.30 R9	DS: ≥ 0.30 R9	DS: ≥ 0.30 R9	DS: ≥ 0.30 R9	DS: ≥ 0.30 R9	DS: ≥ 0.30 R9	-
0.17 W/(m <sup>2</sup> K) Suitable	0.17 W/(m <sup>2</sup> K) Suitable	0.17 W/(m <sup>2</sup> K) Suitable	0.17 W/(m <sup>2</sup> K) Suitable	0.10 W/(m <sup>2</sup> K) Suitable	0.17 W/(m <sup>2</sup> K) Suitable	0.17 W/(m <sup>2</sup> K) Suitable	0.11 W/(m <sup>2</sup> K) -
≥ 6	≥ 6	≥ 6	≥ 6	≥ 6	≥ 6	≥ 6	≥ 6
-	-	-	-	-	-	-	Extra washable
Tarkett Lino has naturally anti-bacterial properties against the most common bacteria, such as E-coli and MRSA							
ON REQUEST: 41	1	2	15	21	ON REQUEST: 41	12	10
Carbon negative from cradle to gate (A1-A3)	Yes	Yes	Yes	Yes	Carbon negative from cradle to gate (A1-A3)	-	Yes
100%	100%	100%	100%	100%	100%	100%	100%

\*Subject to availability-please check upon order. \*\*Cfl-s1 loose-lay on an A1fl and/or A2 fl substrate, loose-lay on a wooden sub-floor and loose-lay on resilient existing flooring.  
\*\*\*CITg(4min.) = 0,06 and CITg(8min.) = 0,09 testing with irradiance of 50 KW/m<sup>2</sup> without pilot flame



The above information is subject to modification for the benefit of further improvement. December 2022

**DISCLAIMER:** Although the utmost care is taken, the data here given could differ and be subject to modifications from a technical point of view.

In its strive to improve its floor solutions, Tarkett reserves the right to modify its technical specifications, colours and materials at any moment and without prior notice. Please, check the effective availability of the products presented at the time of order. Due to the technical limits of reproduction and printing techniques used, the appearance (colour) of the product may vary from the samples, panels or other visual display materials exhibited to the customer. It is mandatory to have the products installed properly if they are to service correctly and safely. Refer to Tarkett technical installation and maintenance directions, available at [www.tarkett.com](http://www.tarkett.com) or at your Tarkett dealer.

\***Elafono** : 2,0mm traditional, 100% natural, corkment underlay to be installed in combination with any compact Tarkett linoleum to get additional sound reduction (up to 15dB, depending on the product). Available in rolls ≤32 x 2m.

## SUSTAINABILITY

Tarkett was the first linoleum flooring manufacturer to be Cradle to Cradle Certified® - underlining our strong commitment to sustainability.

### Product certifications

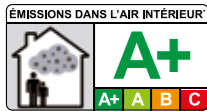


Originale Essenza\*, Veneto Essenza\* 100% linen, Elafono underlayer



All our linoleum ranges (except SD Static Dissipative xF² and Linoleum Conductive xF² ranges)

### International certifications



\*Information sur le niveau d'émission de substances volatiles dans l'air intérieur, présentant un risque de toxicité par inhalation, sur une échelle de classe allant de A+ (très faibles émissions) à C (fortes émissions).



\*Carbon biobased



\*\*Carbon biobased certificate 8C226



Certificate n. DIC-00017



### Factory certifications



All our linoleum products are eligible for LEED v4 credits. For more information: <http://www.c2ccertified.org/products/registry>







## TARKETT HUMAN-CONSCIOUS DESIGN™

Tarkett Human-Conscious Design™ is our pledge to stand with present and future generation. To create flooring and sports surfaces that are good for people and for the planet. And to do it every day.

We deliver on this through the synergy of three commitments:

- Deep human understanding
- Conscious choice. For people and the planet.
- With you. Every step of the way.

■ WESTERN EUROPE: Austria: Tarkett Holding GmbH, Niederlassung Wien - Tel. +43 1 716 44 0 ■ Belgium: Tarkett Belux Sprl - Tel. +32 52 26 24 11 ■ Denmark: Tarkett A/S - Tel. +45 43 90 60 11 ■ Finland: Tarkett Oy - Tel. +358 9 4257 9000 ■ France: Tarkett SAS - Tel. +33 1 41 20 42 49 ■ Germany: Tarkett Holding GmbH - Tel. +49 621 68172 300 ■ Greece: Tarkett Monoprosopi Ltd - Tel. +30 210 6745 340 ■ Italy: Tarkett S.p.A. - Tel. +39 0744 7551 ■ Luxembourg: Tarkett GDL SA - Tel. +352 949 211 8804 ■ Netherlands: Tarkett BV - Tel. +31 416 685 491 ■ Norway: Tarkett AS - Tel. +47 32 20 92 00 ■ Portugal: Tarkett SA - Tel. +351 21 427 64 20 ■ Spain: Tarkett Floors S.L. - Tel. +34 91 358 00 35 ■ Sweden: Tarkett Sverige AB - Tel. +46 771 25 19 00 ■ Switzerland: Tarkett Holding GmbH - Tel. +41 43 233 79 24 ■ Turkey: Tarkett Aspen - Tel. +90 212 213 65 80 ■ United Kingdom: Tarkett Ltd - Tel. +44 (0) 1622 854 040 ■ EASTERN EUROPE: Baltic Countries: Estonia: Tel. +372 55515880 - Latvia: Tel. +37126112014 - Lithuania: Tel. +370 37 262220 ■ Czech Republic: Tarkett org. složka - Tel. +420 271 001 600 ■ Hungary: Tarkett Polska SP Z.O.O. magyarországi fióktelepe - Tel. +36 1 437 8150 ■ Poland: Tarkett Polska Sp. z o.o. - Tel. +48 22 16 09 231 ■ Russian Federation: ZAO Tarkett RUS - Tel. +7 495 775 3737 ■ Slovakia: Tarkett Polska, organizačná zložka - Tel. +421 2 48291 317 ■ South East Europe: Tarkett SEE - Tel. +381 21 7557 649 (44) 569 12 21 ■ Ukraine: Tarkett UA - Tel. +38 (0) 44 35 45 621 ■ ASIA AND OCEANIA: Australia: Tarkett Australia Pty Ltd - Tel. +61 2 88 53 12 00 ■ China: Tarkett Floor Covering (Shanghai) Co. Ltd. - Tel. +86 (21) 60 95 68 38 ext 841 ■ North East Asia: Tarkett Hong Kong Limited - Tel. +852 2511 8716 ■ India: Tarkett Flooring India Pvt. Ltd. - Bangalore - Tel. +91 80 4130 3793 - New Delhi - Tel. +91 11 4352 4073 - Mumbai - Tel. +91 22 2648 8750 ■ South East Asia: Tarkett Flooring Singapore Pte. Ltd. - Tel. +65 6346 1585 ■ AFRICA: Tarkett International: Tel. +33 1 41 20 41 01 ■ MIDDLE EAST: Tarkett Middle East: Tel. +961 1 51 3363/4 ■ Israel: Tarkett International: Tel. +33 1 41 20 41 01 ■ NORTH AMERICA: USA: Tarkett Inc. - Tel. +1 713 869 5811 / Johnsonite - Tel. +1 440 543 8916 ■ Canada: Tarkett Inc. - Tel. +1 450 293 173 ■ LATIN AMERICA: Brazil: Tarkett - Tel. 55 12 3954 7108 ■ Argentina - Chile - Uruguay: Tarkett Latam Mercosur - Tel. +54 11 47 08 07 72 / +54 9 11 44 46 88 82 ■ Bolivia - Colombia - Ecuador - Panama - Paraguay - Peru - Trinidad and Tobago - Venezuela: Tarkett - Tel. +55 11 9 8410 9310 / +55 11 95494 0069 ■ Mexico / Central America: Tarkett Latam Mexico - Tel. +55 11 98410 9310

The designs and photos used in this brochure are for illustration purposes only. They are not contractual images and do not stand for product recommendation.  
Design: AgenceGecko / Photo Interior design: En Bande Organisée - Photo: Mario Simon Lafleur - @bfstudioparis - Illustration: Anna Pepe, Forn Studio  
Product sourcing: Hay - Serax - Flos - MAG: The Conran Shop - Twentytwentyone - Moustache / Print: Altavia

[www.professionals.tarkett.com](http://www.professionals.tarkett.com)

