

DESSO

Desert

CARPET TILES

 Tarkett

STUNNING EFFORTLESS DESIGN

Desert lends a feeling of vast, open spaces to the indoors with its subtly layered organic design. Like the shifting sands of the desert, this textured carpet tile collection allows you to play with the space to create a serene flooring scheme.

Whether your commercial interior project is compact or spacious, the end result is stylish, contemporary flooring.



DESERT 5402





DESERT 9518, 9508, 9516, 8915, 8521, 8823



ENRICHED COLOUR PALETTE

DESERT 7852, 6431, 7921

Offering a wider spectrum of new muted shades to bridge existing neutral and accent colours, the restyled palette of DESSO Desert presents multiple combinations for creative expression.







DESERT 4413, 9093, 5121, 1914, 2117







DESERT 9523, 2914, 2928, 5402, 2021



ENHANCED BACKING OPTIONS

DESERT 2928, 5402

DESSO Desert comes standard with our affordable ProBase backing. However, we offer a wide selection of backing solutions specially developed to meet the needs of today's workplace.

Adding our recyclable EcoBase carpet tile backing, makes the total collection Cradle to Cradle® Silver level certified, fully recyclable and ensures that it records an impressively low circular carbon footprint of 2,32 kg CO₂/m² *.

In addition, the new SoundMaster XLite acoustic backing can be added, for improved sound absorption.

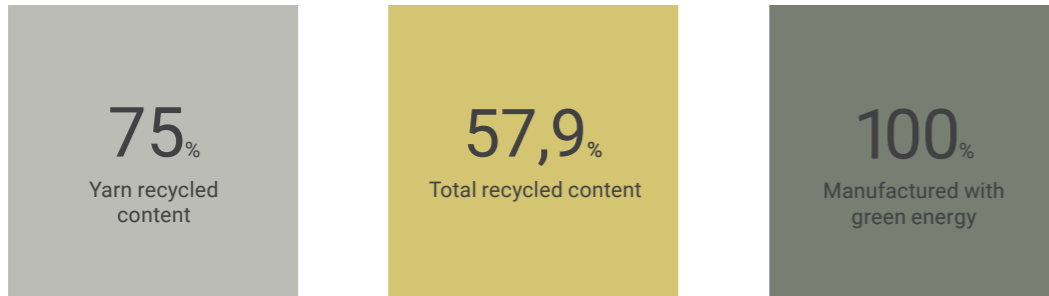
* According to the Environmental Product Declaration (EPD) S-P-09339 – DESSO Desert EcoBase externally verified by Bureau Veritas, based on the total carbon footprint (Modules A-D) with a closed loop circular recycling scenario.



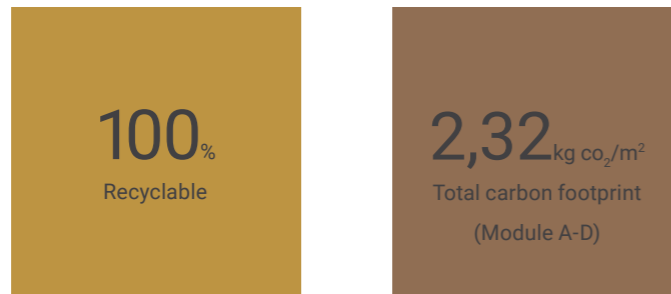
DESERT 7852, 6431, 7921



SUSTAINABILITY CREDENTIALS



Are you looking for a more sustainable solution? Choose our Cradle to Cradle Gold® certified EcoBase carpet tile backing, which in addition makes the total collection fully recyclable and ensures that it records an impressively low circular carbon footprint.



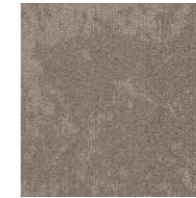


COLOUR RANGE

CLICK HERE TO
DOWNLOAD IN
3D WAREHOUSE



AC89 2928
712086009



AC89 2914
712086008



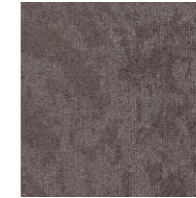
AC89 9516
712086019



AC89 9508
712086003



AC89 1321
712086004



AC89 9523
712086020



AC89 9093
712086025



AC89 9580
712086021



AC89 9518
712086002



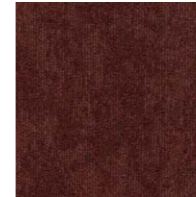
AC89 1914
712086005



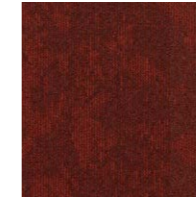
AC89 6118
712086013



AC89 5402
712086012



AC89 2117
712086007



AC89 4413
712086010



AC89 5121
712086011



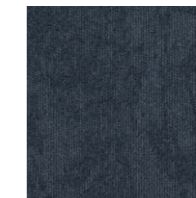
AC89 2021
712086006



AC89 7852
712086014



AC89 6431
712086023



AC89 8823
712086017



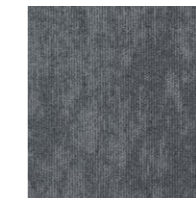
AC89 8521
712086016



AC89 7173
712086024



AC89 7921
712086015



AC89 8915
712086018



AC89 8114
712086022

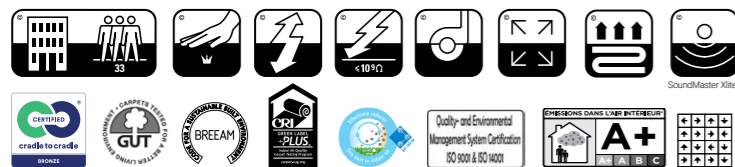
TECHNICAL SPECIFICATION

Preliminary specification according to EN 1307

		ProBase		SoundMaster Xlite	
Type of manufacture	ISO 2424	Tufted 1/10" Structured loop pile		Tufted 1/10" Structured loop pile	
Pile Fibre	ISO 2424	Solution dyed BCF Polyamide 6*		Solution dyed BCF Polyamide 6*	
Dimensions	EN ISO 24342	50 x 50 cm / 19,68" x 19,68" (20 tiles per box)		50 x 50 cm / 19,68" x 19,68" (20 tiles per box)	
Primary backing	ISO 2424	Polyester fleece		Polyester fleece	
Secondary backing	ISO 2424	DESSO ProBase		ProBase SoundMaster Xlite,	
Total thickness	ISO 1765	6.0 mm	0.2 inch	6.5 mm	0.3 inch
Effective pile thickness	ISO 1766	2.9 mm	0.11 inch	2.9 mm	0.11 inch
Total mass	ISO 8543	3900 g/m ²	115.1 oz/yd ²	3950 g/m ²	116.6 oz/yd ²
Total pile mass	ISO 2424	610 g/m ²	18.0 oz/yd ²	610 g/m ²	18.0 oz/yd ²
Effective pile mass	ISO 8543	370 g/m ²	10.9 oz/yd ²	370 g/m ²	10.9 oz/yd ²
Pile density	ISO 8543	0.128 g/cm ³	0.0046 lb/in ³	0.128 g/cm ³	0.0046 lb/in ³
Number of tuft	ISO 1763	1580 /dm ²	132104 /yd ²	1580 /dm ²	132104 /yd ²
Stroll test	ISO 6356	≤ 2.0 kV		≤ 2.0 kV	
Classification for use	EN 1307	33 Commercial - heavy use		33 Commercial - heavy use	
Vertical resistance	ISO 10965	≤ 1 x 10 ⁹ Ohm		≤ 1 x 10 ⁹ Ohm	
Dimensional stability	EN 986	≤ 0.2 %		≤ 0.2 %	
Impact sound reduction ΔL _w	ISO 10140	24 dB		25 dB	
Noise reduction	ISO 354	0.15 α _w		0.20 α _w	
Flammability	EN 13501-1	B _{f1} - s1 (loose laid tested)		B _{f1} - s1 (loose laid tested)	

Preliminary specification

Tarkett carpet products are to be installed in full accordance with the DESSO installation instructions and recognised trade standards. An effective, regular cleaning and maintenance programme is vital for retaining a high appearance level. Tarkett carpet products should only be used as floorcoverings. Note: Tarkett reserves the right to amend this specification without giving prior notice. For the latest versions of the technical specifications, check our internet site: www.desso.com




 Manufactured by:
 Fabriqué par:
 Geproduceerd door:
 Hergestellt von:
 EN 14041
 0493-CPR-0002
 Tarkett BV
 PO BOX 169
 NL - 5140AD Waalwijk

* contains 75% recycled content.

